

PART-A: CREATIVE QUESTIONS

Observe the stems and write down the answer of the following creative questions.

1.



Figure-1

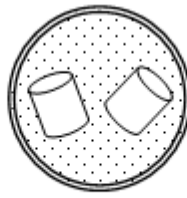


Figure-2

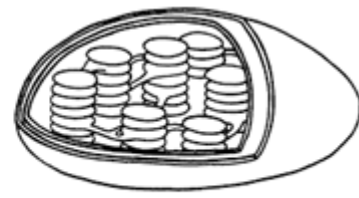


Figure-3

- a) What is the binomial name of potato? *
- b) Why is respiration occurred in figure-1? **
- c) How does figure-2 help in the division of cell?—Explain. ***
- d) The activities of figure-1 are dependent on the activities of figure-3 in a plant.—Analyze. ****

2.

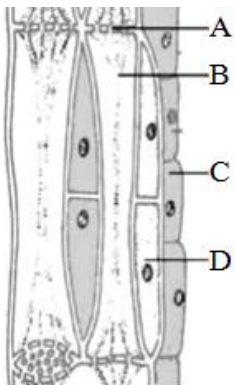


Figure-1



Figure-2

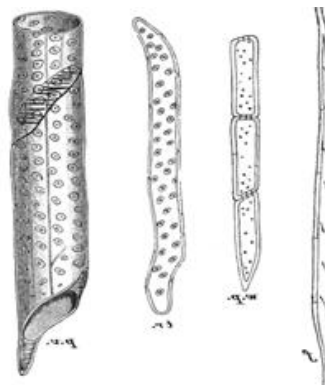


Figure-3

- a) Which part of figure-1 does not contain figure-2 at matured stage? *
- b) Why is 'D' marked part along with 'B' marked part in figure-1? **
- c) Explain the division process of figure-2 in a somatic cell. ***
- d) Though the functions of figure-1 and figure-3 are transportation, the directions of their functions are opposite.—Analyze. ****

3. 35 years old Jamir is a day laborer. His height is 170 cm and weight is 60 kg.

- a) What is lacteal? *
- b) Why does food become acidic inside the stomach? **
- c) Explain the condition of health of Jamir determining his BMI value. ***
- d) If Jamir takes 500 gm rice, 100 gm fish and 10 gm fat daily, will he be able to meet his demand of calorie?—Give your opinion after mathematical calculation. ****

PART-B: SHORT QUESTIONS

Write down the answer of the following questions in one word.

- 1) Which branch of biology discusses the use of bacteria to produce insulin?
Ans:
- 2) In which kingdom of living world is asexual reproduction nearly absent?
Ans:
- 3) By which process of cell division is zygote turned into a body of an organism?
Ans:
- 4) Which cell organelle will you find in all types of living cells?
Ans:
- 5) Which cell organelle can destroy the cell?
Ans:
- 6) What type of cell is the fiber of cash crop of Bangladesh?
Ans:
- 7) What is called the matrix of a chloroplast?
Ans:
- 8) Which part of nucleus synthesizes protein?
Ans:
- 9) Write the name of an epithelial tissue which is found in the wind pipe of respiratory system.
Ans:
- 10) Write the name of an epithelial tissue which is found in the unit of the main organ of excretory system.
Ans:
- 11) Where is mast cell found?
Ans:
- 12) What is called the membrane of cell of muscular tissue?
Ans:
- 13) What are kinetochores composed of?
Ans:
- 14) How many chromosomes are there in a zygote of human being?
Ans:
- 15) Which element is essential for the fixation of nitrogen by microorganisms in the plants?
Ans:
- 16) What is the percentage of carbon, hydrogen and oxygen all together in protein?
Ans:
- 17) At which step of food pyramid will the position of fish and meat be?
Ans:
- 18) 100 gm of which food contains more kilocalorie of energy among milk, mutton, egg, gram and rice?
Ans:
- 19) Lentil $\xrightarrow{\text{Pepsin}}$ what?
Ans:
- 20) In which part of digestive system is digestion of nuts occurred?
Ans: