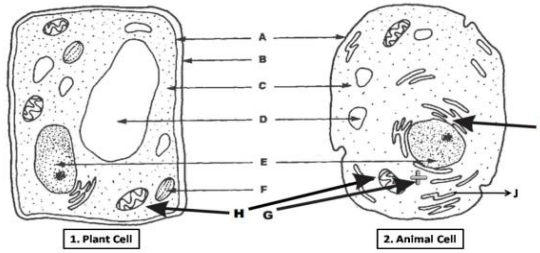


Home Assignment**Science****Class-7****1. Answer the following questions in one word/sentence (Each question carries one *):**

- i. Write down the full form of DNA.
- ii. Which gas is fixed into the soil with the help of bacteria?
- iii. What do you mean by “Saprophytic Fungi”?
- iv. Which elements can be found from marine algae?
- v. How much water does protoplasm contain?
- vi. Which organelle is called the power house of the cell?
- vii. What type of tissue is blood?
- viii. Receiving impulses is the function of which tissue?
- ix. What is pneumatophor ?
- x. What is the function of the eyes of a potato?
- xi. Give an example of a tree that has leaf spine.
- xii. Write down one difference between Atom and Molecule.
- xiii. Define “Symbol” and “Formulae”.
- xiv. If an atom has 11 electrons and its atomic mass is 23, what will be the proton and neutron numbers?
- xv. Define Atomic Energy with example.
- xvi. Give an example of transforming sound energy to electrical energy.
- xvii. What do you mean by “Alternative Source Of Energy”?
- xviii. If you(on land) and your friend (under water) are at same distance from the vibrating plate, who will hear the sound at first?
- xix. What is the velocity of sound in the air?
- xx. What is the elaboration of CFC?

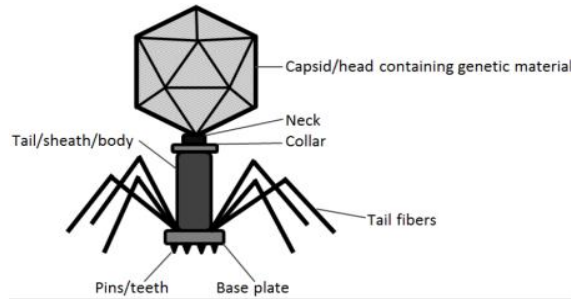
2. Answer the following creative questions:

i.



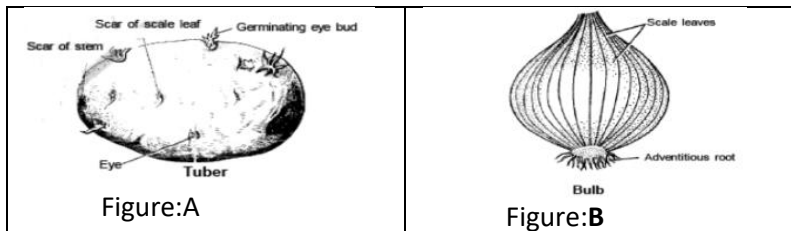
- a) What is karyolymph? *
- b) Write down the functions of the permanent tissue of a plant. **
- c) Discuss the differences between the above two figures. ***
- d) Above mentioned “H’ and “G” are very important for living body. Explain it. ****

ii.



- a) What is Virus? *
- b) Why is it called “**True Parasite**”? **
- c) Write down the properties of Virus and mention two animal and two plant diseases that are caused by virus. ***
- d) How can you differentiate the above figure from a bacteria? Explain in your own words. ****

iii.



- a) What type of roots swell up irregularly? *
- b) How can you differentiate phylloclades from thorns? **
- c) Describe the morphology of A and B. ***
- d) Evaluate the importance of A and B in our national economy. ****

Prepared by : Sharmin Akter Tripty