

Multiple Choice Questions
Chapter Five
Co-ordination and Secretion

Class: VIII**Subject: Science**

1. Where is florigen synthesized?
a) Root b) Stem
c) Flower d) Leaves
2. Which hormone influences on the initiation of flowers?
a) Auxin b) Ethylene
c) Florigen d) Gibberellin
3. True about the hormone, florigen—
i. It is produced in leaves
ii. It is transferred in leaf base
iii. It transforms buds into flower buds
Which one of the following is correct?
a) i and ii b) i and iii
c) ii and iii d) i, ii and iii
4. Who discovered Auxin?
a) Curtis b) Darwin
c) Lamarck d) Linnaeus
5. Where did Darwin observed the effect of light?
a) Leaf b) Radicle
c) Plumule d) Cotyledon
6. Auxin—
i. elongates nodes and internodes
ii. inhibits the process of abscission of fruits
iii. induces adventitious roots in stem cutting
Which one of the following is correct?
a) i and ii b) i and iii
c) ii and iii d) i, ii and iii
7. Which of the following hormone is present in the fruit, flower and seed of a plant?
a) Auxin b) Ethylene
c) Florigen d) Gibberellin
8. Gibberelin is found in—
i. seedlings
ii. cotyledon
iii. growing parts of leaves
Which one of the following is correct?
a) i and ii b) i and iii
c) ii and iii d) i, ii and iii
9. Due to the application of which hormone, abscission of fruits is delayed?
a) Auxin b) Ethylene
c) Florigen d) Gibberellin
10. Gibberelin—
i. elongates nodes and internodes
ii. overcomes the dormancy of seeds
iii. increases the height of dwarf plants
Which one of the following is correct?
a) i and ii b) i and iii
c) ii and iii d) i, ii and iii
11. Which one is gaseous phytohormone?
a) Auxin b) Ethylene
c) Florigen d) Gibberellin
12. Ethylene is present in—
i. roots
ii. seeds
iii. leaves
Which one of the following is correct?
a) i and ii b) i and iii
c) ii and iii d) i, ii and iii
13. Which one helps to ripen fruits?
a) Auxin b) Ethylene
c) Florigen d) Gibberellin
14. Due to which hormone deformed seedlings are formed?
a) Auxin b) Ethylene
c) Florigen d) Gibberellin
15. Which one is a short day plant?
a) Jhinga b) Lettuce
c) Sunflower d) Chandramollika
16. Which hormone helps in repairing of wear and tear?
a) Ethylene b) Gibberellin
c) Abscicic acid d) Indole acetic acid
17. Growth of plants is influenced by—
i. light
ii. water
iii. gravity
Which one of the following is correct?
a) i and ii b) i and iii
c) ii and iii d) i, ii and iii
From the stem below, answer question nos. 18 and 19.
Ela observes that her capsicum tree which is in her house wants to bend towards the open window, not to ripen the green capsicum to red and not to occur normal growth.
18. Which hormone is responsible for the last problem of stem's tree?
a) Auxin b) Ethylene
c) Cytokinin d) Gibberellin
19. The causes of first two problems of the tree given in the stem—
i. Auxin
ii. Florigen
iii. Ethylene
Which one of the following is correct?
a) i and ii b) i and iii
c) ii and iii d) i, ii and iii
20. What is the main part of nervous system?

- a) Brain b) Synapse
c) Nerve cord d) Spinal cord
21. The main functions of nervous system—
i. to keep harmony with the environment
ii. to carry stimuli from different parts of the body
iii. to coordinate the activities of the different organ systems of the body

Which one of the following is correct?

- a) i and ii b) i and iii
c) ii and iii d) i, ii and iii
22. Which one is the longest cell of human body?
a) Sperm b) Neuralgia
c) Nerve cell d) Somatic cell
23. Into how many parts a typical neuron is divided?
a) 2 b) 3
c) 4 d) 5
24. What is the main part of a neuron?
a) Axon b) Dendron
c) Synapse d) Cell body
25. The shapes of the cell body of neuron—
i. star
ii. oval
iii. round

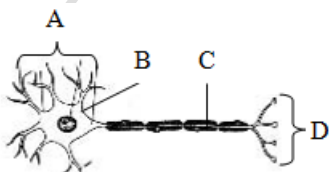
Which one of the following is correct?

- a) i and ii b) i and iii
c) ii and iii d) i, ii and iii
26. Because of absence of what is neuron cell not divided?
a) Nucleus b) Centriole
c) Centromere d) Mitochondria
27. How many types of processes are in a neuron?
a) 2 b) 3
c) 4 d) 5

28. Dendron are—
i. small
ii. relatively wide
iii. breaks up into fine terminal branches

Which one of the following is correct?

- a) i and ii b) i and iii
c) ii and iii d) i, ii and iii
- From the figure below, answer question nos. 29 and 30.



29. Which part is used to add one neuron to another neuron?
a) A b) B
c) C d) D
30. In the above picture 'B' is—

- i. two types
ii. round, oval or star shaped
iii. composed of cell membrane, cytoplasm and nucleus

Which one of the following is correct?

- a) i and ii b) i and iii
c) ii and iii d) i, ii and iii
31. How many parts of central nervous system are there?
a) Two b) Five
c) Four d) Three
32. What is the name of the membrane by which the brain is covered?
a) Pleura b) Cortex
c) Capsule d) Meninges
33. Meninges of brain is—
a) One layered b) Two layered
c) Three layered d) Four layered
34. How many major parts does a human brain have?
a) 2 b) 3
c) 4 d) 5
35. The cerebral cortex is—
i. grayish
ii. whitish
iii. convoluted

Which one of the following is correct?

- a) i and ii b) i and iii
c) ii and iii d) i, ii and iii
36. What is the color of cell body of neuron?
a) Pale b) Gray
c) White d) Black
37. What is the color of nerve fiber or the axon of neuron?
a) Pale b) Gray
c) White d) Black
38. Cerebrum is composed of—
i. thalamus
ii. nerve center
iii. hypothalamus

Which one of the following is correct?

- a) i and ii b) i and iii
c) ii and iii d) i, ii and iii
39. What is called the area between cerebrum and pons?
a) Thalamus b) Mid brain
c) Cerebellum d) Medulla oblongata
40. Mid brain is the center for—
i. visual reflex
ii. auditory reflex
iii. movement of muscle

Which one of the following is correct?

- a) i and ii b) i and iii
c) ii and iii d) i, ii and iii

41. Hind brain consists of—
 a) 2 parts b) 3 parts
 c) 4 parts d) 5 parts
42. What is the lowest part of the brain?
 a) Pons b) Medulla
 c) Mid brain d) Hind brain
43. Which one is not the part of the hind brain?
 a) Pons b) Cerebrum
 c) Cerebellum d) Medulla oblongata
44. Hind brain—
 i. control speech
 ii. controls movement of the body
 iii. maintains the balance of the body
 Which one of the following is correct?
 a) i and ii b) i and iii
 c) ii and iii d) i, ii and iii
45. Which one is called the stalk of brain?
 a) Pons b) Cerebrum
 c) Cerebellum d) Medulla oblongata
46. Which one of the following is called the connector of brain?
 a) Pons b) Cerebrum
 c) Cerebellum d) Medulla oblongata
47. Medulla oblongata controls—
 i. breathing
 ii. heart beat
 iii. swallowing
 Which one of the following is correct?
 a) i and ii b) i and iii
 c) ii and iii d) i, ii and iii
48. Which one controls anger and shame?
 a) Pons b) Thalamus
 c) Cerebrum d) Medulla oblongata
49. Spinal cord—
 i. protected by skull
 ii. protected by vertebral column
 iii. position of gray and white matter opposite to cerebrum
 Which one of the following is correct?
 a) i and ii b) i and iii
 c) ii and iii d) i, ii and iii
- From the figure below, answer question nos. 50 and 51.

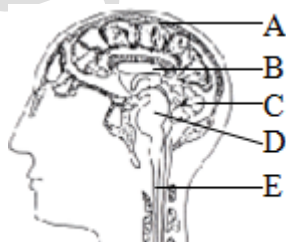


Fig: X

50. Which one is the pons in Fig: X?
 a) B b) C
 c) D d) E

51. In the Fig: X, A—
 i. is the stalk of brain
 ii. control the movement of the body
 iii. controls the regulation of temperature
 Which one of the following is correct?
 a) i and ii b) i and iii
 c) ii and iii d) i, ii and iii
52. Which one coordinates the activities of the different organ system of the body?
 a) Cerebrum b) Cerebellum
 c) Spinal cord d) Nervous system
53. Autonomic nervous system controls—
 i. lung
 ii. head
 iii. secretory gland
 Which one of the following is correct?
 a) i and ii b) i and iii
 c) ii and iii d) i, ii and iii
54. How many constituents does a reflex arc have?
 a) 2 b) 3
 c) 4 d) 5
55. Reflex action is—
 i. inborn action
 ii. automatic action
 iii. involved with brain
 Which one of the following is correct?
 a) i and ii b) i and iii
 c) ii and iii d) i, ii and iii
56. Which one carries sensation from sense organ to spinal cord?
 a) Interneuron b) Motor nerve
 c) Efferent nerve d) Afferent nerve
57. Which one transmits the impulse?
 a) Interneuron b) Motor nerve
 c) Efferent nerve d) Afferent nerve
58. Which one carries message from spinal cord to the muscle?
 a) Interneuron b) Sensory nerve
 c) Efferent nerve d) Afferent nerve
- From the stem below, answer question nos. 59 and 60.
- Recently Prova has learnt to ride a bicycle. She became tired after long cycling. Returning home, she sat to read and asleep. Her elder sister Preema made a fun and smoothly pricks a pin in her hand. Unknowingly she withdrew her hand.
59. Which part of brain works for Prova's cycling?
 a) Pons b) Cerebrum
 c) Cerebellum d) Medulla oblongata
60. Withdrawing of Prova's hand is related to—
 i. brain
 ii. receptor

iii. interneuron

Which one of the following is correct?

- a) i and ii b) i and iii
c) ii and iii d) i, ii and iii

61. Which of the following produces the sensation to the brain?

- a) Irish b) Pupil
c) Retina d) Cornea

62. The waste products of metabolism of man—

- i. urea
ii. water
iii. carbon dioxide

Which one of the following is correct?

- a) i and ii b) i and iii
c) ii and iii d) i, ii and iii

63. How many excretory organs of a human body are there?

- a) 2 b) 3
c) 4 d) 5

64. The main organs of excretion—

- i. skin
ii. lung
iii. kidney

Which one of the following is correct?

- a) i and ii b) i and iii
c) ii and iii d) i, ii and iii

65. Which organ eliminates harmful salt substances from the body?

- a) Skin b) Ureter
c) Lungs d) Kidney

66. Which organ eliminates liquid nitrogenous waste products from the body?

- a) Skin b) Liver
c) Lungs d) Kidney

67. What percent of total nitrogenous excretory products is eliminated as urine from the body?

- a) 60% b) 70%
c) 80% d) 90%

68. Which one is the main excretory organ of human body?

- a) Skin b) Nose
c) Lungs d) Kidney

69. Necessary elements for observing the presence of CO₂ in breath—

- i. test tube
ii. lime water
iii. plastic pipe

Which one of the following is correct?

- a) i and ii b) i and iii
c) ii and iii d) i, ii and iii

70. When does body cell produce CO₂? During—

- a) Excretion b) Digestion
c) Respiration d) Circulation

71. The exhaled air contains—

i. oxygen

ii. water vapour

iii. carbon dioxide

Which one of the following is correct?

- a) i and ii b) i and iii
c) ii and iii d) i, ii and iii

72. What percent of CO₂ is existed in breathing out?

- a) 3% b) 4%
c) 5% d) 6%

73. Sweat contains—

- i. salt
ii. water
iii. carbon dioxide

Which one of the following is correct?

- a) i and ii b) i and iii
c) ii and iii d) i, ii and iii

74. What is termed as the factory of urine production?

- a) Ureter b) Kidney
c) Urethra d) Urinary bladder

75. Where are the excess amino acids broken down? In—

- a) Liver b) Kidney
c) Stomach d) Pancreas

76. The waste products produced during the breakdown of excess amino acids are—

- i. urea
ii. uric acid
iii. ammonia

Which one of the following is correct?

- a) i and ii b) i and iii
c) ii and iii d) i, ii and iii

From the figure below, answer question nos. 77 and 78.

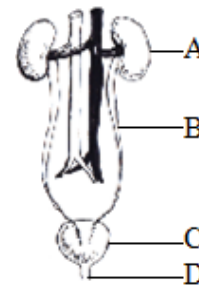


Fig: P

77. Which one acts as filter in Fig: P?

- a) A b) B
c) C d) D

78. In Fig: P, marked part C—

- i. can expand and contract
ii. is the factory of urine production
iii. retains urine for a particular period

Which one of the following is correct?

- a) i and ii b) i and iii
c) ii and iii d) i, ii and iii

79. Because of presence of what does urine look pale yellow?

- a) Urea
- b) Uric acid
- c) Ammonia
- d) Urochrome

80. Kidney lies—

- i.* just below the diaphragm
- ii.* at the back of the abdominal cavity
- iii.* on each side of the vertebral column

Which one of the following is correct?

- a) i and ii
- b) i and iii
- c) ii and iii
- d) i, ii and iii

81. How many kidneys are there in human body?

- a) 1
- b) 2
- c) 4
- d) 6

82. Urine is—

- i.* transparent
- ii.* pale yellow
- iii.* aqueous fluid

Which one of the following is correct?

- a) i and ii
- b) i and iii
- c) ii and iii
- d) i, ii and iii

Sanjib Kumar Pal