

CHAPTER 11 : CURRENT ELECTRICITY
Instructions:

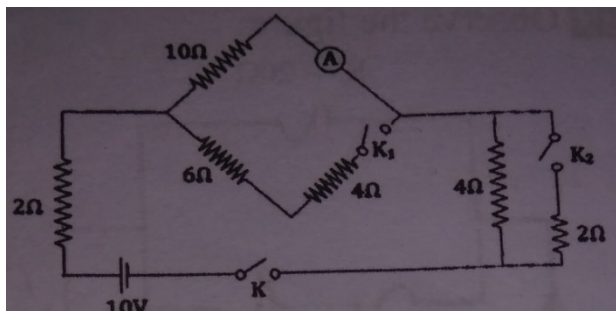
- ✓ Watch the uploaded video classes from School's Website/YouTube channel.
- ✓ For becoming more clear about the basics, watch more than once, if needed.

(Questions given in this worksheet are important questions for all exams)

Creative Questions

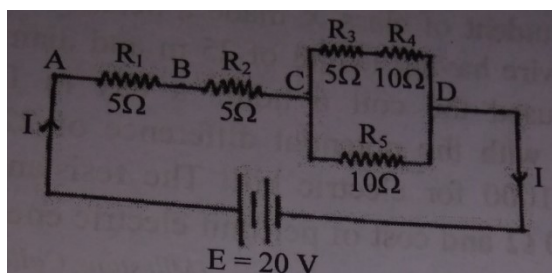
(Solve yourself)

- 1.** Observe the following figure carefully and answer the questions.



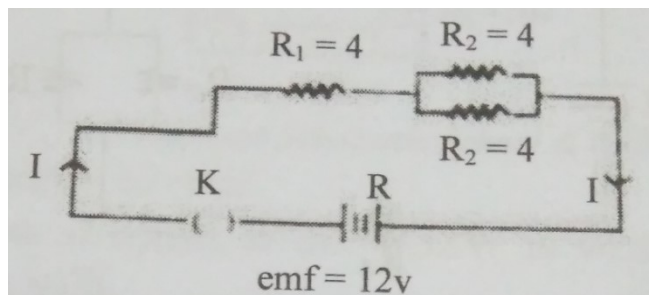
- a) If the keys K and K_2 are closed and K_1 is opened, then determine ammeter reading.
- b) If the keys K and K_1 are locked and K_2 is open, then what percentage of current will change? Analyze mathematically.

- 2.** Observe the following figure carefully and answer the questions.



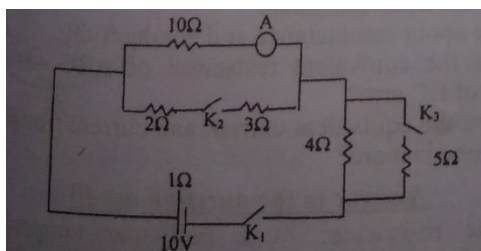
- Determine the equivalent resistance of the circuit.
- Which one is more powerful among the resistances R_2 , R_3 , R_4 and R_5 ? Analyze mathematically.

3. Observe the following figure carefully and answer the questions.



- Find out the equivalent resistance of the circuit.
- Will be the electric current through R_1 , R_2 and R_3 same or not? Analyze mathematically.

4. Observe the following figure carefully and answer the questions.



- If the keys K_1 and K_3 are closed and K_2 is opened, what will be the flow of current?
- If the keys K_1 and K_2 are closed and K_3 is opened, how many times the flow of current will be which was mentioned before?