

Name of the student: Date:/...../.....

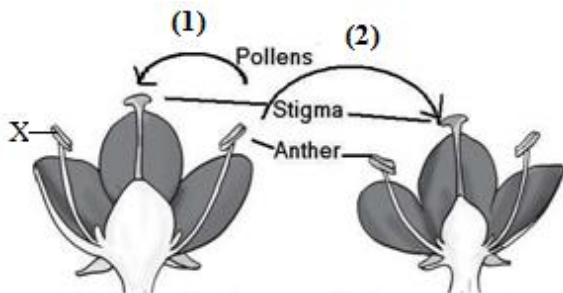
Creative Questions

❖ **Creative Question: 01**

A	Usually round and developed at the tip of floral axis
B	The outermost whorl of flower
C	Usually colorful of flower
D	Pollens are developed here
E	It is at center of a flower

- a) What is dioecious plant? 1
- b) What do you mean by inflorescence? 2
- c) Draw a figure with A, B, C, D and E parts. 3
- d) 'D' and 'E' directly take part in reproduction.—Analyze. 4

❖ **Creative Question: 02**



- a) What is gamopetalous flower? 1
- b) Why is mustard an insect-pollinated flower? 2
- c) Explain the formation of gamete in 'X' marked part. 3
- d) Which pollination among (1) and (2) play role in creating new characteristics? Give your comments after having a comparative discussion. 4

❖ **Creative Question: 03**

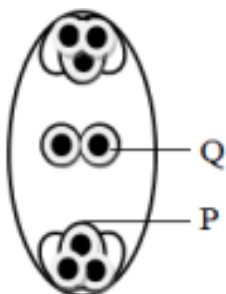
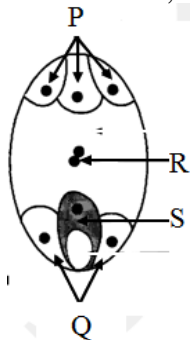


Fig: A

- a) What is implantation? 1
- b) What are the importances of formation of placenta? 2
- c) Explain the producing of the labeled part 'P' in the figure 'A'. 3
- d) "After fertilization the changed state of the labeled part 'Q' plays a significant role for the living world."—Analyze the statement. 4

43. X in the above figure—
i. is a tube cell
ii. is a generative cell
iii. produces two male gametes
 Which one is correct?
 a) i b) ii
 c) i and ii d) ii and iii
44. How many nuclei are there in four embryo sacs of flower?
 a) 8 b) 16
 c) 32 d) 64
45. How many cells are there in ten embryo sacs of flower?
 a) 12 b) 36
 c) 60 d) 70
46. How many times is cell division occurred in embryo sac?
 a) 2 times b) 3 times
 c) 4 times d) 5 times
- Observe the following figure and answer the question nos. 47, 48 and 49.



47. Which one is egg?
 a) P b) Q
 c) R d) S
48. Which one is diploid?
 a) P b) Q
 c) R d) S
49. Male gamete—
i. fuses with P
ii. fertilizes S and develop zygote
iii. fertilizes R and develop endosperm
 Which one is correct?
 a) i b) ii
 c) i and ii d) ii and iii
50. Which one develops triploid endosperm?
 a) Somatic cell
 b) Synergid cell
 c) Antipodal cell
 d) Secondary nucleus

51. What is called the cell of opposite side of egg apparatus inside the embryo sac?
 a) Zygote cell b) Somatic cell
 c) Synergid cell d) Antipodal cell
52. What is the nature of endospermic cell?
 a) Haploid b) Diploid
 c) Triploid d) Double diploid
53. The other male gamete which does not fuse with the egg, develops—
 a) Seed b) Fruit
 c) Ovule d) Cereal grains
54. What is the first cell of a sporophyte?
 a) Pollen b) Ovum
 c) Zygote d) Endosperm
55. What is called the cell towards the micropyle?
 a) Basal cell b) Apical cell
 c) Diploid cell d) Antipodal cell
56. Which cell turns into embryo?
 a) Basal cell b) Apical cell
 c) Diploid cell d) Antipodal cell
57. After fertilization—
i. stimulation starts in the ovary
ii. ovary of the flower turns into fruit
iii. ovule with endosperm turns into seed
 Which one is correct?
 a) ii b) iii
 c) i and iii d) i, ii and iii
58. Into how many categories are all the fruits grouped?
 a) 2 b) 3
 c) 4 d) 5
59. In case of false fruit—
i. only ovary turns into fruit
ii. apple and dellenia are false fruits
iii. floral parts along with ovary turn into fruit
 Which one of the following is correct?
 a) i b) iii
 c) i and iii d) ii and iii
60. Which one is not included in asexual reproduction?
 a) Budding b) Fertilization
 c) Binary fission d) Fragmentation