



Cosmo School

Class-6

Chemistry

Creative questionwork sheet

Chapter-6

Subject teacher- Syeeda Sultana

Date-01.10.2020

1)

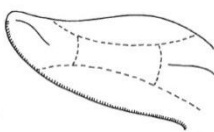


Figure-A

- What is shown in above figure?
- Why is yellow or white coating formed in the above organ?
- Explain how we get different taste by the above organ.
- Discuss the function of above organ.

2)



Figure-A

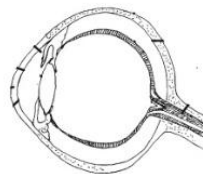
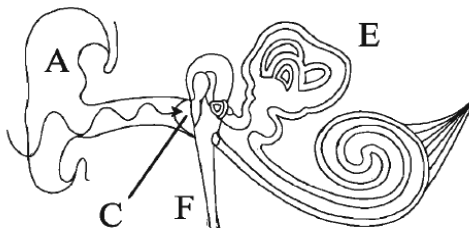


Figure-B

- What are sensory organs?
- State the functions of figure A.
- Describe different parts of figure A.
- Label figure B and describe its different parts.

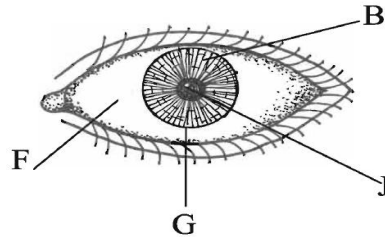
3)



- What do you mean by auditory sensory organ?

- b)* What would happen in absence of (A).
- c)* What is the function of (E)?
- d)* What are the importance of (C) and(F).

4) With the help of the diagram given below answer the following questions:



- a)* What is sclera?
- b)* What happens if (G) is distorted?
- c)* Explain the function of (B).
- d)* Discuss how (J) helps us to see things.